



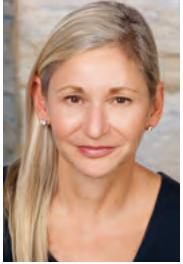
And so with the sunshine and the great bursts of leaves growing on the trees...I had that familiar conviction that life was beginning over again."

– F. Scott Fitzgerald, "The Great Gatsby"

THE PRESERVER

MAY 2025

VOL. 1: ISSUE 4



A LETTER FROM LEADERSHIP: *Celebrating 100 years of Gatsby*

Dear Neighbors,

125 years ago, Howard Gould bought the undeveloped land that is now the Sands Point Preserve. 25 years later, F. Scott Fitzgerald meandered through Sands Point, finding inspiration for Gatsby's East Egg in the town's opulent homes and lavish lifestyles.

As we walk around the Preserve today, we can't help but imagine what these grounds looked like a century ago. What did the Guggenheims see when they took their morning stroll? What did they talk about? Who else was invited in? In this issue of *The Preserver*, we make these musings, inspiring us all to take in the vast significance of the history of the Preserve. *Join us as we take a trip down historical memory lane!*

All the Best,

Karli Hagedorn
Chair of the Board

Jeremiah Bosgang
Executive Director

UPCOMING MAY EVENTS

LONG ISLAND FAIRY FESTIVAL

Saturday, May 3 • 10 am – 4 pm

(Rain date May 4)

WORKSHOP: WRITING A THRILLER

6 weeks, starting Thursday, May 8

6:30 – 8 pm

WILDERNESS SURVIVAL: TOOL MAKING

Saturday, May 10 • 10 am – 12 pm

ECOTHERAPY

Saturday, May 17 • 10:30 am – 12:30 pm

FOUR SEASONS IN MUSIC SPRING CONCERT

"AMAMI IN PRIMAVERA" (Love me in spring)

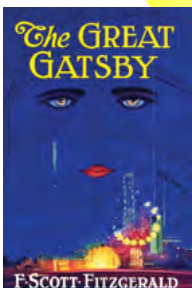
Sunday, May 18 • 3 – 5 pm



For our full calendar and to purchase tickets, visit www.sandspointpreserve.org

SPOTLIGHT ON FITZGERALD:

Was Gatsby's East Egg based on Sands Point?



In 1925, F. Scott Fitzgerald published his most heralded masterpiece, *The Great Gatsby*. Centered on themes of class, disappointment, exclusion, and love, the novel offers a window into New York society in the Jazz Age. At the time, Fitzgerald lived in Great Neck, which he depicted as Gatsby's West Egg, home to the "new money" class. Across the bay stood Sands Point,

which Fitzgerald saw as Gatsby's East Egg – a place of sophisticated and elitist "old money." In this way, *The Great Gatsby* was somewhat autobiographical, as Fitzgerald never felt like he fit in with the wealthiest social class of Sands Point. Today, we thank Fitzgerald for the poetic picture he painted of Long Island's Gold Coast in the 1920s – happy 100th anniversary, *Gatsby*!

125 Years of History at the Sands Point Preserve

Did You Know?

Howard Gould built both Castle Gould and Hempstead House to please his wife, actress Katherine Clemmons. But Katherine could not be pleased. It was rumored that she had an affair with Buffalo Bill, and the couple divorced before ever living in either mansion.



Howard Gould



Katherine Clemmons



British refugee children at Hempstead House

Did You Know?

Modern day simulation technology got its start right here on our grounds. The U.S. Naval Training Device Center (NTDC) designed and tested early flight simulators and other tools used in military training. These technologies evolved into the complicated simulators used today in medicine, entertainment, education, and other fields.



1900: Howard Gould buys the undeveloped land of the SPP.

1902: Castle Gould is built.

1912: Hempstead House is built.

1917: Howard Gould sells the property to Daniel and Florence Guggenheim

1923: Harry Guggenheim builds Falaise.

1930: Daniel Guggenheim dies; Florence Guggenheim builds Mille Fleurs.

1940: Florence Guggenheim opens Hempstead House to British refugee children.

1942: Florence Guggenheim donates the property to the Institute of Aeronautical Sciences (IAS).

1946: IAS sells the property to the United States Navy.

1971: Nassau County acquires the property.

2003: The Sands Point Preserve Conservancy is formed.

2025: Today, 50,000 people visit the Preserve annually for education, culture, history, and nature.



Falaise, home of Harry Guggenheim

Did You Know?

"Falaise" is French for "cliff," which is apropos because the mansion was built on a cliff overlooking the Long Island Sound. Charles Lindbergh was a good friend of Harry's, visiting Falaise often. He wrote much of his pivotal memoir, "We" at Falaise, pages of which are on display at the museum today (as is Lindbergh's 1968 Ford Falcon station wagon). Unfortunately, Lindbergh became a Nazi sympathizer during World War II, leading Harry to end their friendship.



Sustainable gardens behind Hempstead House

Did You Know?

The Conservancy was started by a group of concerned local residents committed to ensuring the future of the Preserve. What began as a small group of stakeholders has grown into a thriving non-profit organization. For everything the Conservancy is today, we have their leadership, vision, and hard work to thank!

THE SANDS POINT PRESERVE CONSERVANCY

127 Middle Neck Road, Sands Point, NY 11050

516.571.7901 • info@sandspointpreserve.org

www.sandspointpreserve.org

JOIN OUR
EMAIL LIST!

